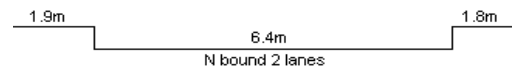
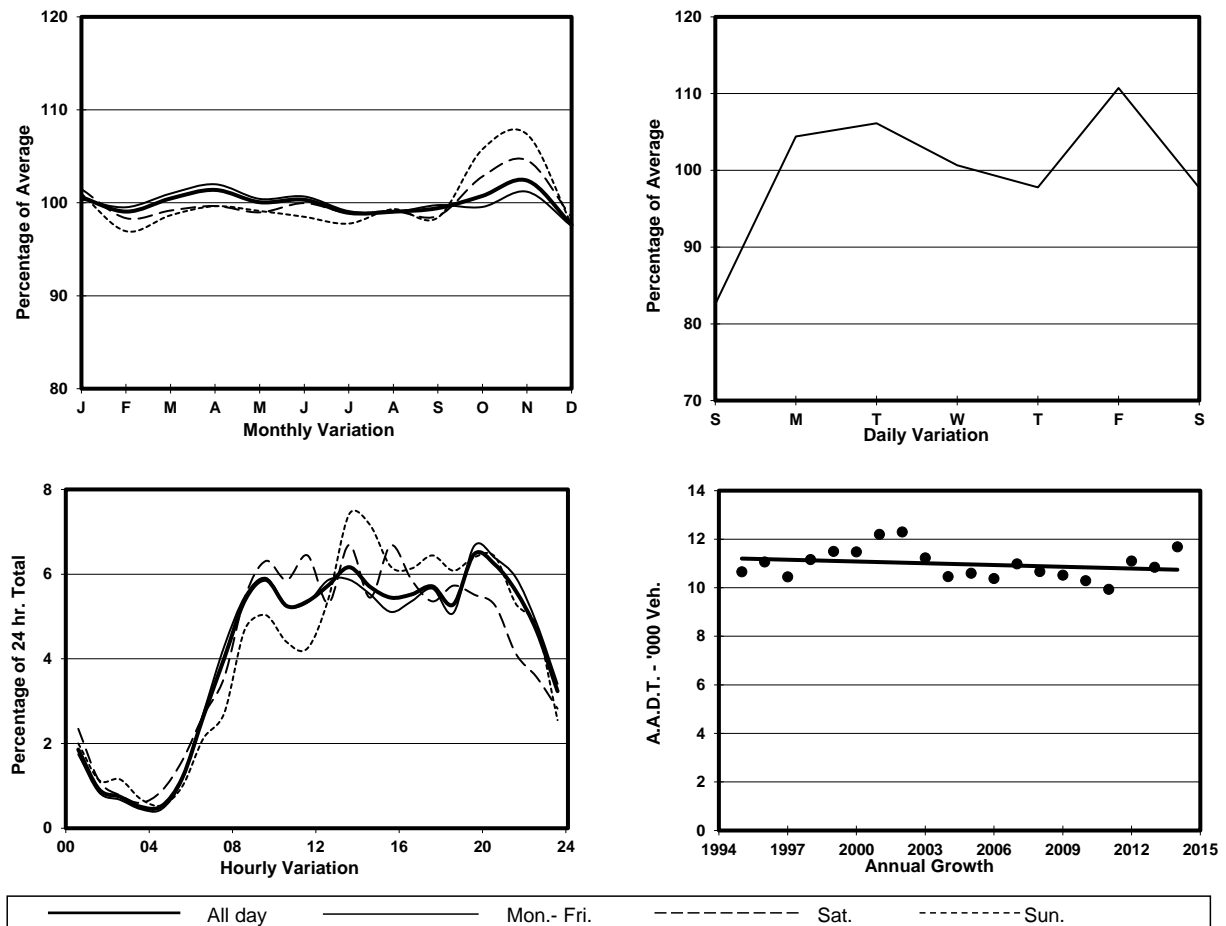


YEAR 2014
 COVERAGE (B) STATION 2403
 ROAD NETWORK MINOR
 ROAD TYPE LOCAL DISTRIBUTOR

LINK ICE HOUSE ST (from CONNAUGHT RD C to LOWER ALBERT RD)



1. TRAFFIC FLOW VARIATION AND GROWTH



2. TRAFFIC CHARACTERISTICS (BY DIRECTION)

| Parameter | All - Day | Mon. - Fri. | Sat. | Sun. |
|--------------------------------------|-----------|-------------|-----------|-----------|
| NORTH BOUND | | | | |
| A.A.D.T. | 11680 | 12250 | 11530 | 9730 |
| R 12 / 24 - % | 65.4 | 64.7 | 68.7 | 65.9 |
| R 16 / 24 - % | 88.4 | 88.5 | 87.2 | 88.8 |
| AM Peak Hour | 0900-1000 | 0900-1000 | 0900-1000 | 0900-1000 |
| One-way flow at AM peak hour | 690 | 720 | 730 | 490 |
| T - % (AM) | - | 10.4 | - | - |
| PM Peak Hour | 1700-1800 | 1700-1800 | 1600-1700 | 1700-1800 |
| One-way flow at PM peak hour | 670 | 690 | 680 | 630 |
| T - % (PM) | - | 9.4 | - | - |
| Prop.of commercial vehicles - 16 hr. | - | 8.1 | - | - |
| SOUTH BOUND | | | | |
| A.A.D.T. | - | - | - | - |
| R 12 / 24 - % | - | - | - | - |
| R 16 / 24 - % | - | - | - | - |
| AM Peak Hour | - | - | - | - |
| One-way flow at AM peak hour | - | - | - | - |
| T - % (AM) | - | - | - | - |
| PM Peak Hour | - | - | - | - |
| One-way flow at PM peak hour | - | - | - | - |
| T - % (PM) | - | - | - | - |
| Prop.of commercial vehicles - 16 hr. | - | - | - | - |

3. OTHER INFORMATION AND COMMENT

4. Vehicle classification and occupancy - Monday to Friday

| Time | | Class of vehicle | | | | | | | | | |
|------------------------|-----|------------------|---------|------|---------|------|------------|-------|---------|---------|------|
| | | Motor | Private | Taxi | Private | PLB | Goods veh. | | Non | Fr. Bus | |
| | | Cycle | Car | | LB | | Light | M & H | Fr. Bus | SD | DD |
| 0700-0800 | Pro | 2.1 | 13.7 | 53.8 | 2.1 | 10.6 | 5.3 | 2.1 | 9.5 | 0.0 | 0.8 |
| | Ocp | 1.0 | 1.8 | 2.0 | 3.0 | 9.7 | 1.4 | 2.0 | 7.7 | 0.0 | 18.3 |
| 0800-0900 | Pro | 1.6 | 23.8 | 43.6 | 0.0 | 6.3 | 7.9 | 0.8 | 15.1 | 0.0 | 1.0 |
| | Ocp | 1.0 | 1.8 | 1.9 | 0.0 | 12.4 | 1.6 | 1.0 | 13.4 | 0.0 | 24.2 |
| 0900-1000 | Pro | 0.5 | 35.0 | 42.9 | 0.0 | 6.4 | 4.8 | 0.5 | 9.0 | 0.0 | 0.9 |
| | Ocp | 1.0 | 2.0 | 1.9 | 0.0 | 12.3 | 1.6 | 1.0 | 16.6 | 0.0 | 23.1 |
| 1000-1100 | Pro | 0.6 | 28.3 | 42.4 | 0.6 | 11.6 | 9.0 | 0.6 | 5.8 | 0.0 | 1.0 |
| | Ocp | 1.0 | 1.7 | 1.7 | 2.0 | 6.2 | 1.7 | 1.0 | 6.3 | 0.0 | 10.2 |
| 1100-1200 | Pro | 0.7 | 38.7 | 35.0 | 0.7 | 8.0 | 8.0 | 2.2 | 5.8 | 0.0 | 0.7 |
| | Ocp | 1.0 | 1.7 | 1.6 | 3.0 | 7.5 | 1.8 | 2.0 | 5.8 | 0.0 | 9.5 |
| 1200-1300 | Pro | 1.3 | 45.8 | 34.6 | 0.0 | 9.2 | 3.9 | 1.3 | 3.3 | 0.0 | 0.7 |
| | Ocp | 1.0 | 1.7 | 1.7 | 0.0 | 8.6 | 1.7 | 1.0 | 6.2 | 0.0 | 11.3 |
| 1300-1400 | Pro | 1.5 | 39.1 | 38.3 | 0.8 | 10.5 | 4.5 | 0.0 | 4.5 | 0.0 | 0.8 |
| | Ocp | 1.0 | 1.6 | 1.8 | 8.0 | 8.4 | 1.7 | 0.0 | 7.3 | 0.0 | 12.8 |
| 1400-1500 | Pro | 0.6 | 49.4 | 31.2 | 0.6 | 8.2 | 4.1 | 0.0 | 5.3 | 0.0 | 0.6 |
| | Ocp | 2.0 | 1.3 | 1.8 | 6.0 | 8.4 | 1.6 | 0.0 | 5.2 | 0.0 | 9.0 |
| 1500-1600 | Pro | 1.8 | 36.6 | 28.6 | 0.9 | 12.5 | 8.9 | 2.7 | 7.1 | 0.0 | 0.9 |
| | Ocp | 1.0 | 1.3 | 1.5 | 15.0 | 8.6 | 1.8 | 1.7 | 9.1 | 0.0 | 19.3 |
| 1600-1700 | Pro | 1.4 | 46.9 | 30.6 | 0.0 | 12.8 | 0.0 | 0.0 | 7.8 | 0.4 | 0.2 |
| | Ocp | 1.0 | 1.4 | 1.9 | 0.0 | 8.3 | 0.0 | 0.0 | 13.6 | 24.5 | 20.0 |
| 1700-1800 | Pro | 0.0 | 44.4 | 33.9 | 0.0 | 8.5 | 3.9 | 0.0 | 8.5 | 0.2 | 0.7 |
| | Ocp | 0.0 | 1.4 | 2.1 | 0.0 | 13.2 | 1.2 | 0.0 | 4.2 | 16.0 | 16.3 |
| 1800-1900 | Pro | 1.2 | 49.0 | 35.0 | 0.0 | 5.2 | 0.6 | 0.0 | 8.2 | 0.4 | 0.4 |
| | Ocp | 1.0 | 1.3 | 1.7 | 0.0 | 12.1 | 1.0 | 0.0 | 8.9 | 16.7 | 10.7 |
| 1900-2000 Peak hour | Pro | 0.9 | 47.0 | 28.0 | 0.0 | 9.0 | 1.8 | 0.9 | 11.7 | 0.2 | 0.5 |
| | Ocp | 1.0 | 1.3 | 1.8 | 0.0 | 11.3 | 1.0 | 1.0 | 4.3 | 13.0 | 12.5 |
| 2000-2100 | Pro | 1.5 | 16.3 | 71.0 | 0.0 | 6.7 | 0.7 | 0.0 | 3.0 | 0.6 | 0.4 |
| | Ocp | 1.0 | 1.3 | 1.4 | 0.0 | 11.3 | 2.0 | 0.0 | 3.3 | 5.7 | 8.0 |
| 2100-2200 | Pro | 0.0 | 22.3 | 71.5 | 0.0 | 4.6 | 0.0 | 0.0 | 0.9 | 0.2 | 0.5 |
| | Ocp | 0.0 | 1.5 | 1.4 | 0.0 | 14.0 | 0.0 | 0.0 | 4.0 | 11.0 | 4.0 |
| 2200-2300 | Pro | 1.1 | 23.5 | 62.9 | 0.0 | 9.6 | 2.1 | 0.0 | 0.0 | 0.3 | 0.5 |
| | Ocp | 1.0 | 1.5 | 1.6 | 0.0 | 5.8 | 1.0 | 0.0 | 0.0 | 3.0 | 6.5 |
| 16 hours | Pro | 1.0 | 36.2 | 41.6 | 0.3 | 8.6 | 4.1 | 0.6 | 6.7 | 0.1 | 0.7 |
| | Ocp | 1.0 | 1.5 | 1.7 | 5.7 | 9.5 | 1.6 | 1.5 | 8.9 | 13.3 | 14.5 |

Legend

Pro. Proportion of vehicles in % (Sum may not add up to 100% due to figure rounding)
Ocp. Average occupancy of vehicles
M&H Medium and Heavy